

ASBIS[®]

High-Tech Cluster

Full stack R&D center

1. Office spaces
2. Multi company Warehouse
3. Three R&D Labs
4. Engineering Center
5. Robots R&D Center
6. Pilot Production lines
7. Show and demo rooms
8. Convention Center

12,000 sq.m. facilities

Limassol , Cyprus

 **Prestigio**
The Art in High-Tech

**CRON**
ROBOTICS
Collaborative Robots

 **REAL SCIENTISTS**
Research Labs

CLEVETURA
Touch On Keys

COMPUTING

IOT

 **pereniO**
Internet Of Things

CANYON
YOU CAN
Smart accessories

ELECTRONICS

ENERGY

JOULE
Energy Storage

 **LORGAR**
Hardware for Gamers

GAMING

HEALTHCARE

 **IOCLINIC**
Ionic Cosmetic

A E N O
Smart Home Appliances

MED-TECH

 **RSL**
REVOLUTIONARY
LABS
 **PROMED**
BIOSCIENCE
Bio Med Research

 **Medical Diagnostics**



**The Business model:
Value Add Distribution + own brand**

Official launch is November 29, 2022

\$225 Bln is cobots market size by 2026

Industrial Cobots



\$12.5Bn in 2026
CAGR 44.8%

Service Cobots



\$103Bn in 2026
CAGR 36%

Security Cobots



\$74Bn in 2026
CAGR 17%

Professional Cleaning Cobots



\$24.8Bn in 2026
CAGR 22.8%

Logistics Cobots



\$10.9Bn in 2026
CAGR 22.9%

ROI or TCO based Sales technics



Cold Plasma Emitters production line

Expense prior the robotization
216,000 EUR / every year:

10 operators * 1800 EUR/ month

6 Cobot arms replaced 7 operators
For 135,000 one time acquisition plus 20k
annual maintenance fee

Means based on 5 years amortization
The annual expense is 27k +20k +
 $3*1800*12 = 111,800$ EUR

=> 105,000 EUR saving per year

EXAMPLES OF SOLUTIONS



**Robotic welding
solution for
structural steel
constructions**




**Assembly robotic
solution for a
production line**



**Autonomous
cleaning solution
for malls &
parking lots**

MORE IN: <https://www.asbis.com/catalog/robotic-solutions>



DISTRIBUTION AGREEMENTS IN ROBOTIC SEGMENT

AUBO cobot arms



AUBO - i3



AUBO - i5



AUBO - i10



AUBO - i16

Dobot cobot arms



+



C



C++



C#



python™

Python

ROS

ROS



MATLAB

Matlab



LabVIEW

LabView



Android

Gaussium cleaning autonomous mobile platforms



Vacuum 40



Scrubber 50 Pro



Scrubber 75



Delivery X1 Pro

DH grippers



AG Series

Electric Adaptive Gripper with 145mm stroke



CG Series

Electric Centric Gripper for Cylindrical workpieces



PGC Series

Electric Collaborative Gripper



PGE Series

Slim-type Electric Gripper with force control



PGS Series

Miniature Electro-Magnetic Gripper



RGD Series

Slim-type Electric Parallel Gripper



PGI Series

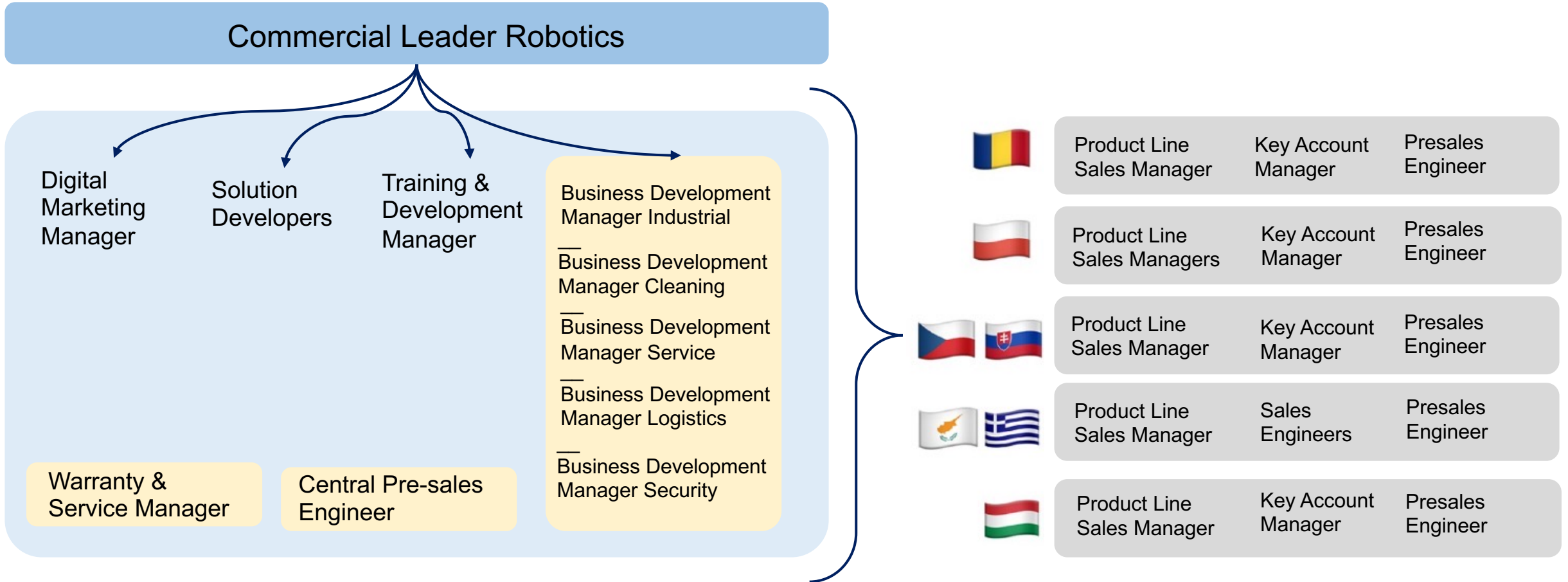
Electric Gripper with 80mm stroke and 7 kg load



RGI Series

Electric Infinite Rotation Gripper

AROS COMMERCIAL TEAM ORG STRUCTURE



The logo for CERON ROBOTICS is centered on a dark blue background with a grid of glowing lines and nodes. The word "CERON" is written in a large, white, stylized font with rounded, blocky letters. Below it, the word "ROBOTICS" is written in a smaller, white, sans-serif font. To the left of the text is a stylized white icon consisting of three horizontal, rounded rectangular shapes stacked vertically, resembling a robot's head or a stylized 'E'.

CERON

ROBOTICS

CORE EXPERTIZE AREAS OF CRON ROBOTICS

Motors & bones
+ Math

HW+FW+SW

ROS
compliant

SW Platform to
manage
multibrand
cobots

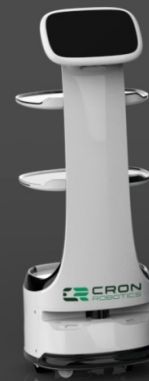
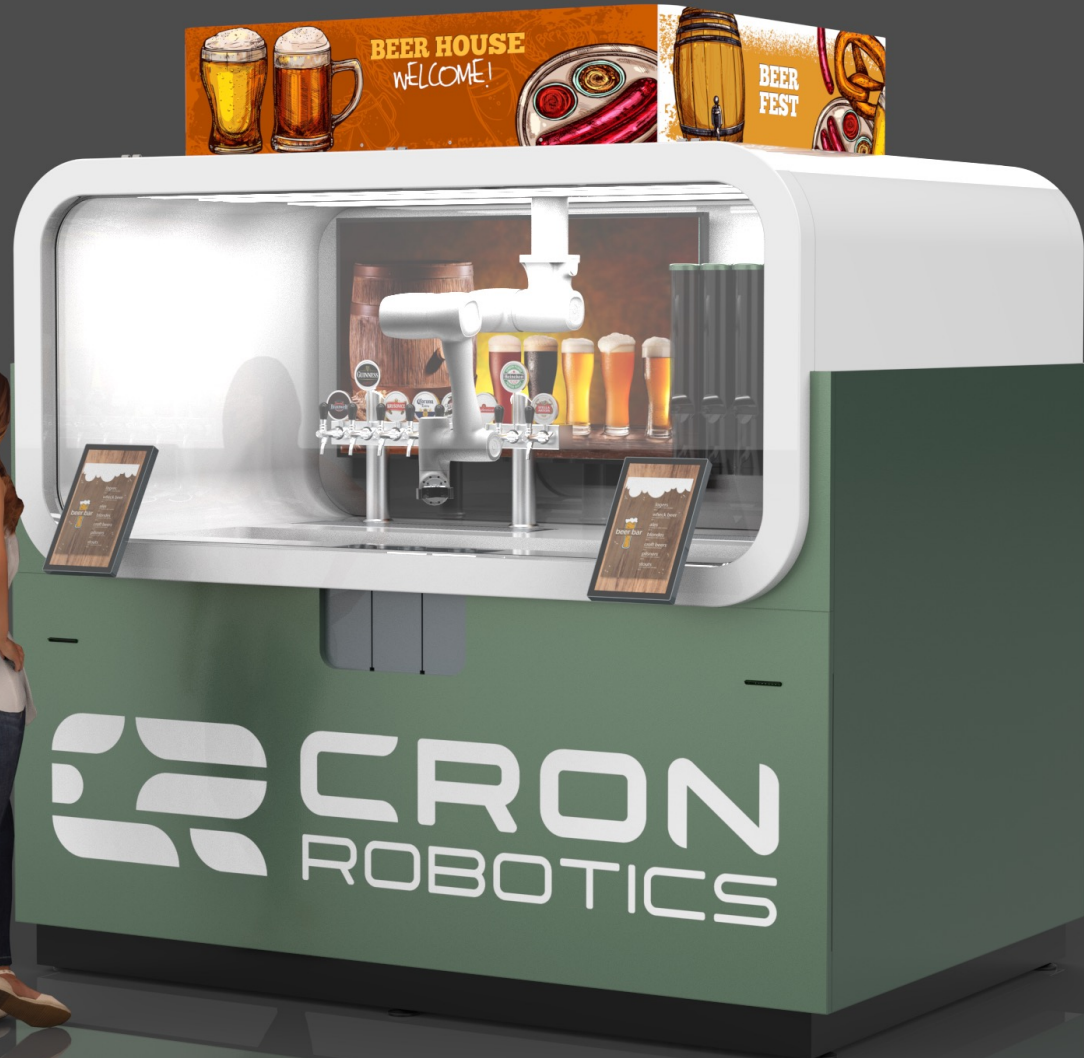
Turn key kiosk
solutions

Neuro vision

Cobot Arms



Draft beer serving kiosks



Barista Coffee serving kiosk Gen. 2



Robotic Wine Cellar

